

BodyTom®

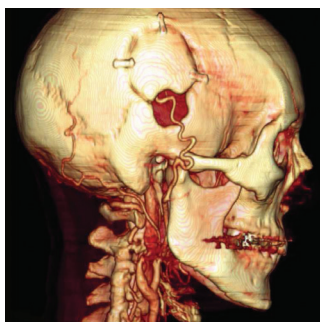
Portable, full body 32-slice CT scanner



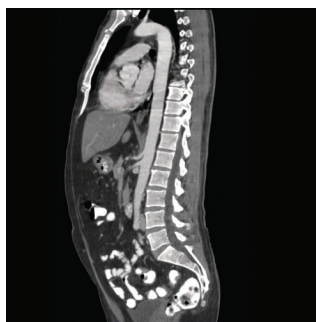
Image Gallery



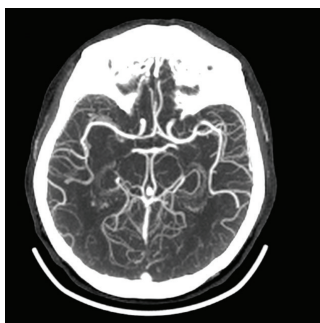
3D full spine scan



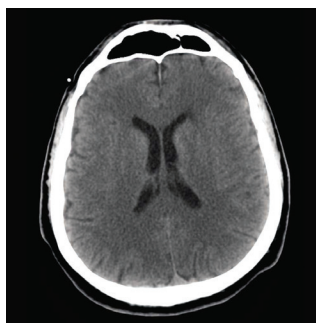
EC/ICA bypass



Contrasted body scan



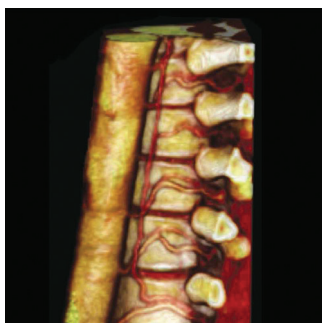
CT angiography



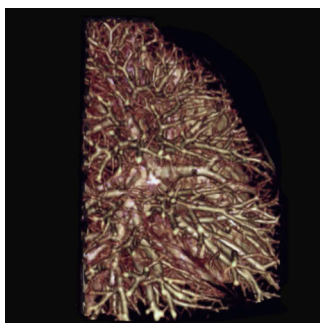
Scan of healthy brain



3D full body contrast



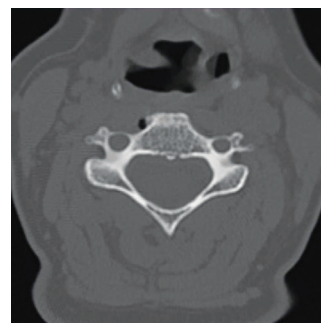
3D contrasted spine scan



Lung scan



3D spine

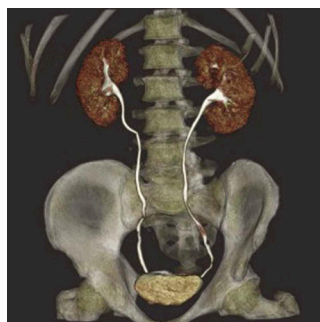


Cervical spine

Image Gallery



AP scout after scoliosis correction



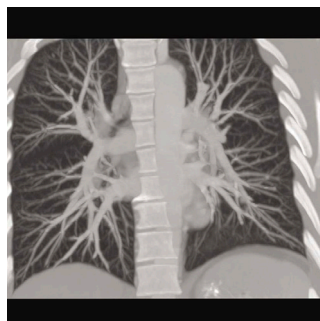
Urogram contrasted scan



Vascular abdominal scan



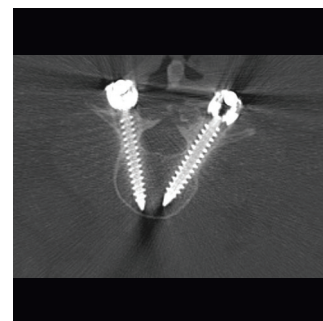
Kidney detail



2D MIP, lung scan, vascular detail



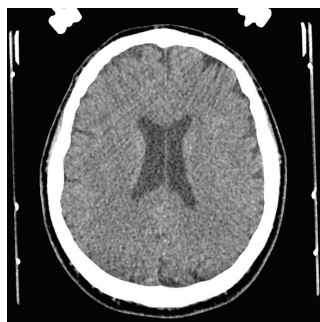
Liver detail



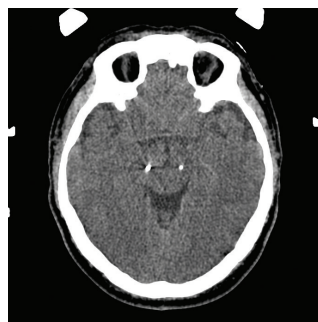
Pedicle screw placement confirmation



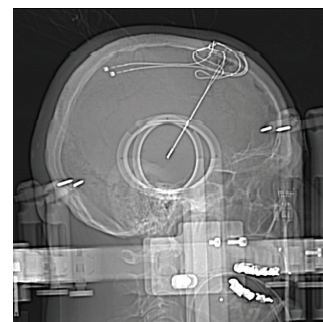
Lateral scout after scoliosis correction



DBS placement, pre-op CT scan



DBS placement, intra-op confirmation



Low dose scout scan